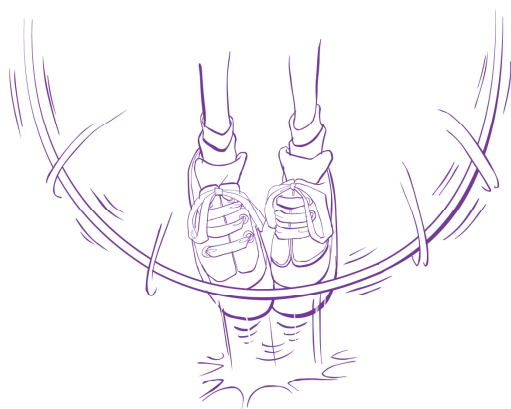


Active Schools Cluster Clubs Term 1



All the below clubs will be starting up for term 1 and are run in conjunction with Active Schools, they are open to all pupils within the Mintlaw Cluster and you can register for any of the clubs through the below link and then choosing the Mintlaw Cluster.

www.aberdeenshire.gov.uk/request/active-schools/

| | | | | | <u>Start</u> | <u>End</u> | <u>Cost</u> | |
|--------------|-----------|-------|-------------|--------------|--------------|------------|-------------|------|
| <u>Tues:</u> | Hockey | P4-7 | 6.00 – 7.00 | Cluster Club | MACBI | 30/8 | 6/10 | Free |
| <u>Wed:</u> | Athletics | P1-4 | 5.00 – 5.45 | Cluster Club | Longside | 31/8 | 5/10 | £12 |
| | Athletics | P5-7 | 6.00 – 7.00 | Cluster Club | Longside | 31/8 | 5/10 | £12 |
| <u>Fri:</u> | Advance | | | | | | | |
| | Running | P4-S1 | 4.30 – 5.15 | Cluster Club | Aden Park | 2/9 | 30/9 | Free |
| | Beginning | | | | | | | |
| | Running | P4-7 | 6.00 – 6.30 | Cluster Club | Aden Park | 2/9 | 30/9 | Free |

Places are limited so please make sure you register your child, an email confirming your child's place will be sent out with any additional information about the sessions you may need to know.

For further information & any queries please contact:
Pip Fleming, 07917 271812 or Email pip.fleming@aberdeenshire.gov.uk